

Indian Botanic Garden Library
BOTANICAL SURVEY OF INDIA

CLASS NO.

BOOK NO. STI-c

ACC. NO. B-10,129

Strombosia



Capsule renfermant 2 nouvelles étiquettes complètes
les arriennes, pour les nos 315, 443, 511, 726, qui
seront collés dans les cartons ou les appareils
les mots i folis, subulicam, Josta, intercapitulum, perovicia
sont dans les Calles, Cay microripon, hyperbica et
flascenere

STIRPES CRYPTOGRAMÆ

VOGESO-RHENANÆ;

QUAS

IN BHE.M SUPEIUORIS INFEBIOISQUE, NEC NON
VOGESORUM PRÆFECTURIS

COLLEGERUNT

J. B. MopfiEor Sruyeriensis Med. Doct. et C, IVESTLES *Argentinensis*
Facult. Med. Argent. Botan. Prof*.

— *Species in hunc fasciculum non creaverit.*

Posteros tamen tot iivpoluros fmv militairs ex muscia
suguror, quot ez rvtiuk vegetabilibus.—

linn, *Cti low ?* //main. *Acai*, torn. III. p. 241.



FASCICULUS XI.

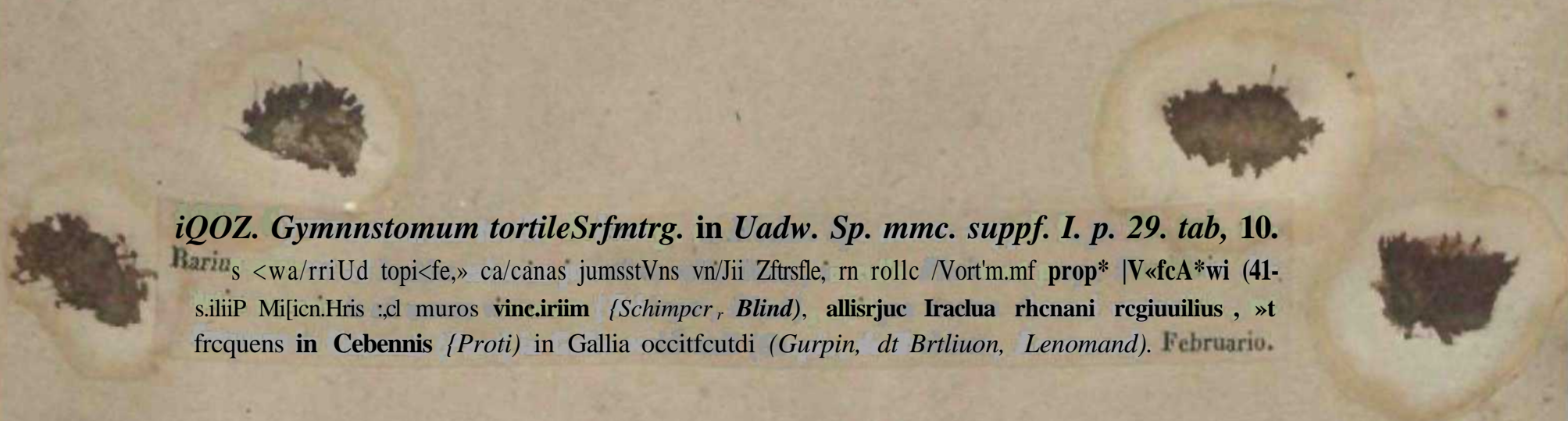
BRUYERJI Vogesorum. 1840.



1001. *Aspidium angulare* Kitaib. in Willd. sp. pl. 5. p. 257.
Ad rupes in umbrosis Sylva: nigrae badensis, legit am. Al. Braun. Augusto.

1002. *Phileas palustris* Srttch e& Schimp. *Jinjol. eur. fas.* \. p. 15. tab. 7.

!• lock uliginosis circa Bipoatem, JT»pe Dacretillial Alsalias, Bruch eL *Sckimyer*. Muio, Junii*.



iQOZ. Gymnnstomum tortile Srfmtrg. in *Uadw. Sp. mmc. suppf. I. p. 29. tab, 10.*

Barin s <wa/rriUd topi<fe,» ca/canas jumsstVns vn/Jii Zfrsflc, m rolle /Nort'm.mf prop* |V<fcA*wi (41-
s.iiiP Mi[icn.Hris ;,cl muros *vinc.iriim* {*Schimpcr*, *Blind*), *allisrjuc Iraclua rhenani regiuuilius*, »t
frcquens in *Cebennis* {*Proti*} in Gallia occitfcutdi (*Gurpin*, dt *Brthiuon*, *Lenomand*). *Februario.*

d004. *Gymnoslomum Bonplandi Humh. in find. BnjoL wwV. i-/».* 101.

PhySCOmjLcium BuH^landi iiruck tt Schimytr tn Viit.

In ericctis arcnaccis bumidJUMUJis propc Gthwe'dUr arnicas D^f MtdUembtdL Junio.

d00J. *Weiasia pusilla* ffedw. *Stirp. crypt*, 2. tab, 29.

*Ad nip** aHatim Jurossi (Schimper), LolbariDgias (D^r Godron} et In Ccbennis [Prast], per æstatem.*



1006. *Weissia cylindrica* Bruch ex Brid. *Bryol.univ.etBryolgerm.t.29. f.1?*>-

Ditrichum cylindricum Bruch et Schimper*

Ad saxa arenaria umbrosa rarius ad terrain prope *Offweilcr, Bruyfrcs*, et ad ropes granitosas circa *Gerardmer*, primo vere rarius tamen fructus profert.

A *Weissia cirrata* cum qua in fasc. V^o mixta atque a Bryologis plurimis pro varietate habita fuit, toto coelicyMn vegetationis modo iam capsulae foliorumque forma ac indule tiliTct.

1007. *Desmatodon glacialis liruch et Schimper in Lilt.*

Desmaludon glacialis Funck ex parte, *Desmatodon latifolius* //erfir, *Weissia latifolia Schwecq*, ex parte,
Trichoslomum Inlifolium Funck in *Moostaschmb.* et *Schuxfa*,
Apud nos primus observavit am. *Schimper* mense junio in summo cacumine Ballonii sulzensis ubi
ad terrain socio *Androsaccs carnea* cespitose creseit





1008. CincMotott rfpariiu Bruch et Schfaper m Lilt*

TrichosLmmirrt riparitwrf // eh. et \[tihar, BLOOmltriuia ri|hirium RritK

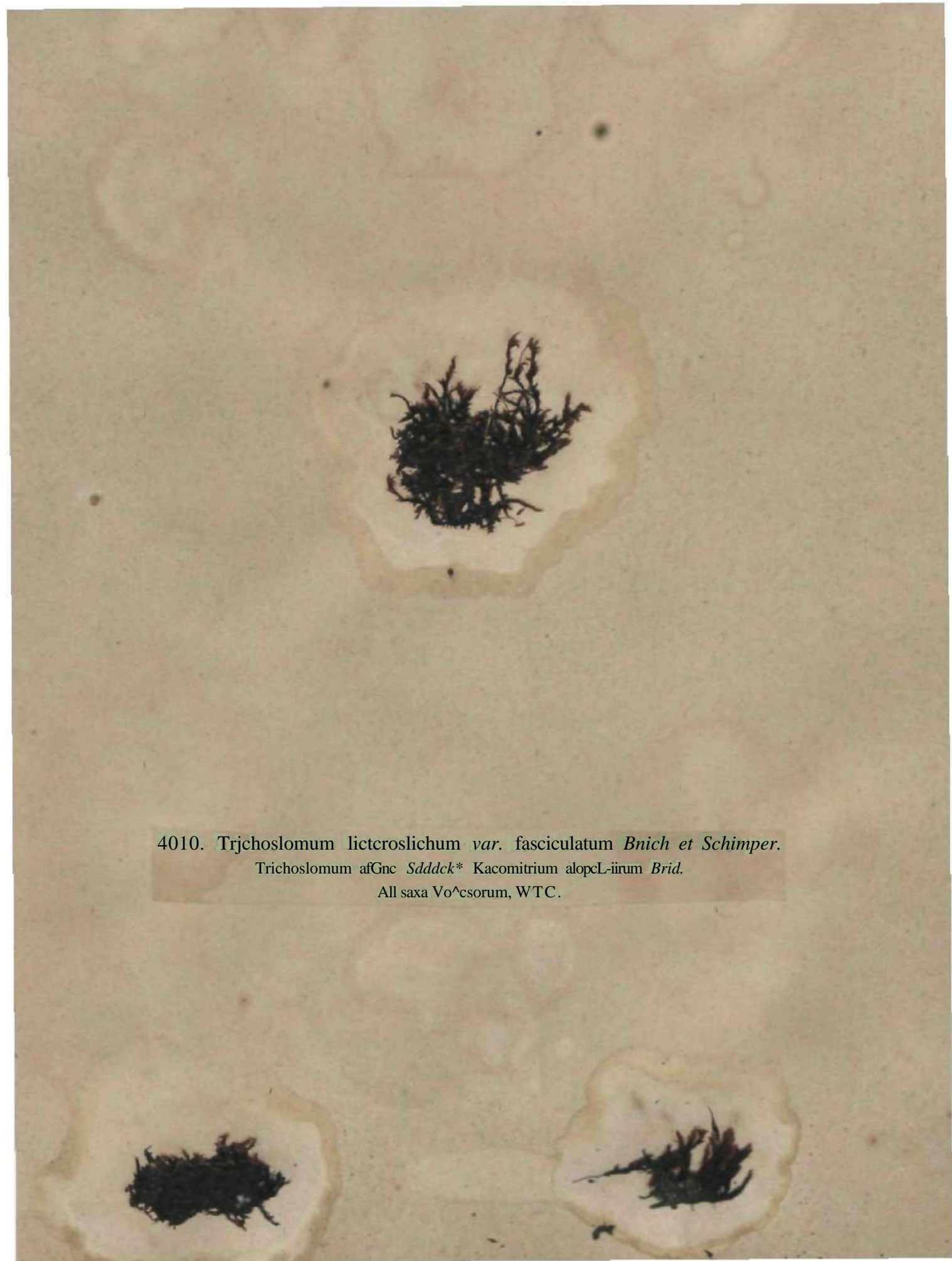
Stirps rarissima ;ijiud nos prirao b. Funck in rivuljs Jifrassi prope BasQtfn i utoerwit, postea *.
emico Guepin circa Andegavum sat copi(isc collect.i. /Estate.



1009. *Trichostomum microcarpum* Hedw. Sp. mus. p. 12. lab. 25.

Racomitrium microcarpum Brid.

Ail rapes ^ogesorum Bumorum in **Boote ilohntck**, etc., promistuc cwm DTyplodontc *sudetico et*
b>Lert<. Yerc fructus matunl. Trichoslomum rjuod sub nomine mieniciirpi iu GBC, IV", n" i1-'.
pm maxima parLc ad Tricljustumum sudulicum rclLTCudum cst. Planluia nostra primo **intnita**,
Racomilrii LatitUj talypra el peristumio faciic dJslingucnila.



4010. *Trichoslomum lictroslichum* var. *fasciculatum* *Bnich et Schimper*.


Trichoslomum afGnc *Sddck** *Kacomitrium alopl-iirum* *Brid*.

All saxa Vo^csorum, WTC.



1011, *Trirhostomum incurvum* Hornsch. in *Flora* 1819.
Dryptodon incurvum Sree. Cimmio obtior Thuch et Schimp, in liti.
Ad nil monlis Hokneck. Vote.





1012. *Triehoslonuim tortile* **Schrad.** *Crypt, exsicc. N° M.*
TricliustomTim turlile tl pusillum *funek.* Dicraaiium turfite // "*eb. et ifohr.*
Ad viarum c**Tarum* lalera iromiscue cum DidytuondonU¹ **betronmUo** in terra arcnosa per totmn
Vogesum plus minus Vul^{arc} Li>spItaU **Vere.**



**>

1013. *Sciitlostega osmiiu* Licea *Web. et Mohr bot. Taschenb. p. 92.*

Schistostesa pennnb Uoak et Tayl GymnOstammfll pennaLum fftdw. St. Cry. J. tab. 29.

In Iracln rbenund pr<iq< Ehiddbapm toco ft'dfhrunnen did lanurt detexil : cl iDcrj-ptis arenosis
inLra Gcrmbach cl Gaggmau SylnB tiyyiu! AWiwr observavit, Juniu.*

1014. *Dicranum majus* Schweeg. in *ffedw. Sp. muse, suppl. i. tab. Kt.*

Dicranum majus U, *majus* W & A. *et* Mohr.

Ad Iruum pulv. in summis Vogesis, in Silva nigra montana, rarius, in Eretico* in
gallia occidentali [et Brebisson]. *Jislate.*





1013. Dierannra flagellare Hediu. Sltrp. crypt. *. fib- 1.

Xd Castaaen; lrucl's patridsj pnpt *OjfomUr* Atalia infer. Amic. &A«(p«f testate laU; fructificans

ixilk'git el all nrnin* *Jlrueh ex. fi^rn* bijiimtinii missiim h:ili<^hni?.

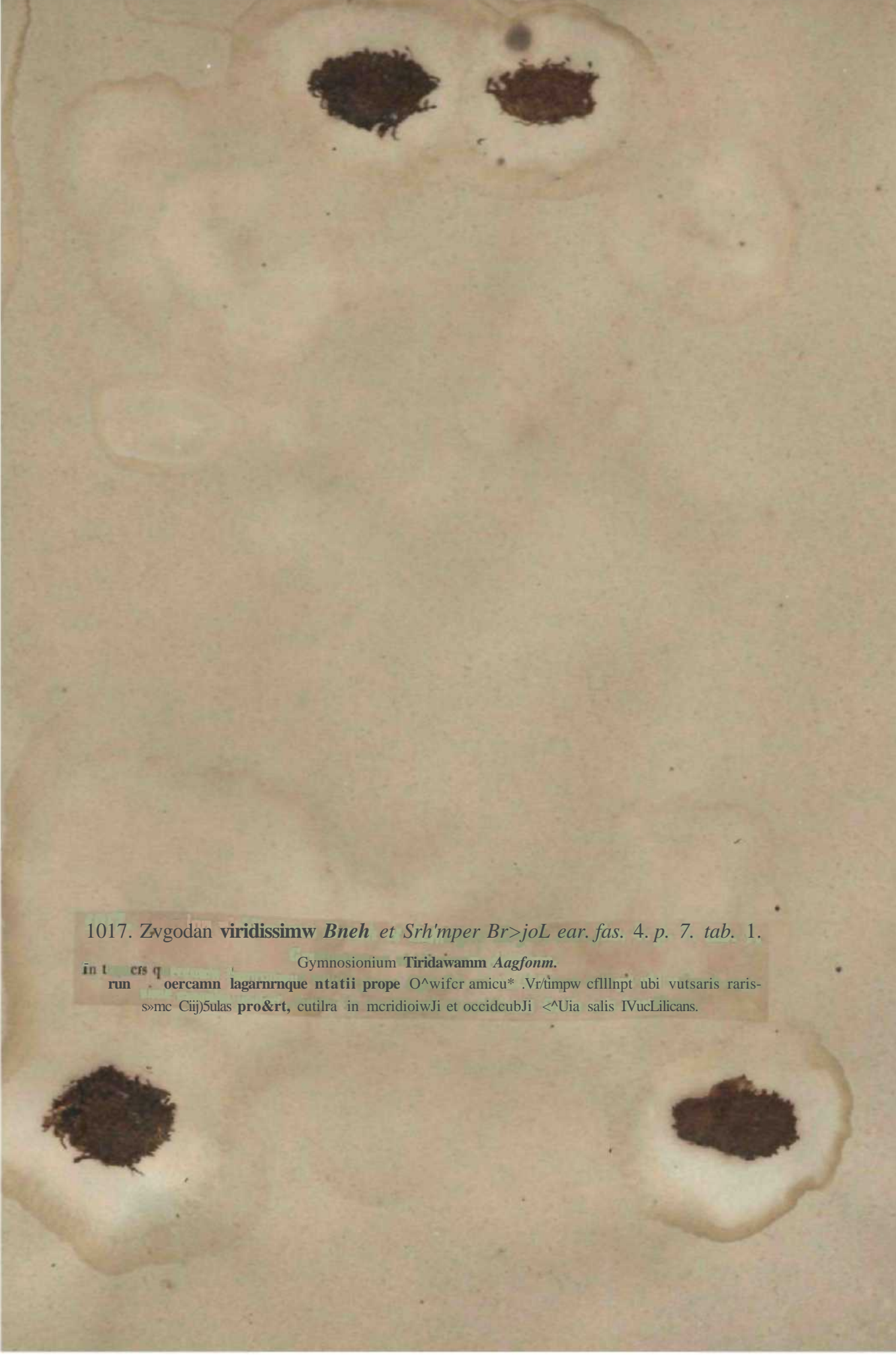
Species sub nomine Uitraiii flagcilaris a m>»s **bic** *l. it*^o BH craissa ad Dkraaum inU?rrulitura

Bridel refercDtk est.



101C. *Zygodon Moujreolii* Bruch et Schimper Bryoh Europ. fa&c. h.p. 1. tab. \ •
Gymnostomum lapponicum var. *Persoon*.

In rnpitn (issiris SOCHI ZfgtAmta Iqqwaka rantitii *ffa&neek*, usquedd slerilis; scd in monte *Dore*
Avrrnia; id«i delectis i'l ili .ii«. *Bmt'gnier* mem, K|il 1858 Icrlns, necnonin Salisburgo, Tyrolis
alque Aurvegiw altiilLus cum capsulis *semper* occurrit.



1017. Zvgodan *viridissimw Bneh et Srh'mper Br>joL ear. fas. 4. p. 7. tab. 1.*

Gymnosionium Tiridawamm Aagfonm.
in t crs q
run oercamn lagarnrque ntatii prope O^wifer amicu* .Vr/impw cfillnpt ubi vutsaris raris-
s>mc Cij)5ulas pro&rt, cutilra in mcridioiwJi et occidcubJi <^Uia salis IVucLilicans.

401S. *Callinrinca undtilata* var. *minor* *JlritL. Bnjol. univ. 2. p. 104.*

Pdjtridmo conlmvf rsum /*tattling Mtwgtrchl. Desk, p. '20b.*

la solo argiloso arenaccoaii viaruai sylvaiitarura lalera propt BiponLcm ab amica £ rue h. Vere coHerti,



1019. *Funaria Muhlenbergii* Schwag. in *ffedtv. Sp. muse, tupl, i- tali. 66.*

Io viuonrum niuris prop* *Durlach Sum badensis uarfto* rum tliccis msiuris *Lrtnit aauciu Schm&er.*
Fawiculi VIII. nostri *Fun.iria Mulilonhprpi liijus ipedej* mora *tsiiftol* a Bryold^{is} romjilurilius rin-
•une *Funaria*; srratar s,iuUiti fuit. In codeni fasciculi' evmplaria ab arnica *Gttejtin* ciam repc-
nuntur qu« x *W. Atvtti FUIKU-ia Jn bcnnui Dullumodo* discrepant.



020. Bryura **carneam** Linn—*Bruch et Schtmp.Br.eiir.fase. G-9. p. kZ.tAK.*
In *rplo*ij hunudb id rij«» Hhciii propc Ar^tntoralonii f*Schimptr*) circa Bipunleni f/JucAJ. Æstate.





1021. *Bryum torquescens* Bruch et Schimp. *Bnjol eur. fasc. G-9. p. 49. tab. 20.*
Ad mania **Argenloni** a **b.** Nestlero dctcftmn ct a erf. *llonaehuh* pro Uryii eapiBaria varicUle
hatitum. JESialc.



1022. Bryum Divalii [?], ^ Bruch at Schimp. *Bryol. eur. fas. 6-9, p. 64, tab. 31.*
Mun. Duvalii Schreb. » i/«J». *Sjt. mute. ntp. 1. for* i. ^. 1^6. («6, 179.*
In praeceptis ti M-4i,ri, n(t rupesque madidas mantis HoAntck. «StBo. AlitjuotLfwiq exemplaria
hujus musci pnc Bryw [nttcDleni n* 7«9 nostri fasc. VIII. locavimus.



1023. *Bryum sangiineuni* Ludw. in *Brid. Ittyof. univ.* p. 671.

Bryum erythrocnemum Schw. *Bg. ia* IMr. *Sp. mute, ntpl. I. lal.* '0, n« *BridH.*

In lem arenosa ioler gramina loch eprkts mutitos's jjJvanira prope *Offweiler* et *Bj'pontem* (araici
J?;uc/i cJ *Schimper*). Julio.

Plantula hie qua a nosi*, Drro enLlim-arpo (vide fesc. IX n" 859), dclerfs caracteribus omi«s
sola capsula clongain primo intuitu distinguemk eLiam in hoc fowiculo life illic promiieue reperilnr.



102*. *Diplocnium tristebenm* Farted MoGsU&ckenbitck ex parle.

W&ttS* lonjheta, itrittui plaiimonmi mctorom.

Junio Jul. *** i o pjt u Jibus lorurfjs June ml fraqueai HBU twpWTCTJ, IneUn rlraniiii r;iriu prope
Carla seralle Jurassi legimus atque
exemplaria juniora it; fate. IV. una cum Diplucuiuio lung/jeto iiterduni dedimus.

1023. *Timmia megapolifana* *ffedat.* *Stirp, crypt. \. lab. 31.*

Jn sylvis Juw amki *Ltn* ifijttrriu, ScAwtpw, in CebennautE. Prart iLsuic oLscravcrui.





1026. *Bartramia pomiformis* var. *crispa*.
Bartramia erispa Storr. — *Bridtl Bnjol*, «*nir*, 2, p. 41,
In rupium Hssuris Inmiidi* \n^i'sorum. *Æstate*.

1027. *Fabronia pusillit* *Rmhli in Mcdiv. Sp. mtsr. suppl. i. para 2. tab, 99.*
Ad arborum buncos amljuljeri linrii Iwlin. *Gencrenauj* (del. *Rruter*) <λ in Cclietinii uml« citra-
plar in nostra sb ;injki Pro*(accejninus. .listate.



1028- |«8kea sULUHe ffidw. Stfy- ""iff"- *• ""*• 9,
 Ad arborom Iruneos cl radices IQ sylvis jir^pc jtf^Mm** , u"ti^{L JULI} " (F eissenstein)
 agosto , septemb .



4029. *Hypnum Stokesii* Turn, *Mwr. hiber. Spirit*, p. 159. tab. 13. / . 2.

Bjpnuni riⁱ«Jiusculum JIntek in Litt-

Ini Vograis sylvis ad siixn madida srcus scaturigincs W rifdot, bye^{ne ac vere.}



iOZO. Hypnum StrLil Web. et Afolvr hot. Taschenb.p, 309.

In tnnicis jniiriiiis Vogesi siipriurij, DMbite.

10 II. Hypnum recoctum Letf. Stirp. crypt. h. tab. 33.

[Linnæus] del [Minium Linn. Ihpmmi Uiriluisrimun IJ. recogMlüm Jrid,

Ad trrim in SJITIS circa Bntyret, Officeiler, Mulhauim, auguslu alque stjicmbri tipsulas raaturat.





1032. *Hypnum polymorphum* Hook c(*TayL -muse. bnt. p. 107. tab. 26.*

In s.iiiis vogesorom iinibru^is sotiiv Ilyjino incurvato, vcre]>rimi.



dO33. *Hypnum callidirosum* *Hiibener muse. germ. p. G83.*

iljpnun Slercudun callidmrni Brid. Brynl imtV.2.p. C51.

In Iicrbidfs cl ad mi mttinLU Uolmetk Vogciomm. Juiiiv.



IQ34. *Hypnum polycarpon* Jhnd. ex Voit in *Slurvt flor. germ. crijpt. fas.* U-

In fossis hujnidis sjrpius inundali* o*ulli argcflt'tratmsis. Estate.

An ab Hjpn. adunpi var. L. tenui (y|^ (-IsCm ,wft. VI. »* 52^); species satis di\$lincla, in omnibus partibus suluii n>busii_{urj} liat)ilus, vegclalici, arleratpifl DBUia eongruunt.

iOZ'6. *Hypnum cylindricum* Bruch et Schimp. in tilt.

LesLca kidensis Al. Bruun,

In coUibiJi irgike«» umbrosis propc Dvrhvh mense **Cebmario** aicicus Schimper callogil,
etiam propr Bijjoutera ab amico Bruch observatum.



1056. *Feckerft* *ciaaoifbuani* *ficdiv.* *Sp. muse. p. 2Ü/. tab. hi.*

Ad hpich'5 calcarias juruisieai luci *RatiUrarhlust* dicti **dacatusinper.** Badinsis .J'/. 7/ruuji ct in **sais**

Kistrili *Huilandtburj* TogeSorum piluf ^iin/. **V*ns.**







1037. Lunularia vulgaris Mich, noc gen. h. tab, U.

Munlinulia cnicini.i *lin.*

Frons wimfer lunains apml nos lob^ann ^ah-Jitioicin nllis **anelisqae** caldariorum sal **frequens,**
sed usquedo feuaa pilaalui Umlcia cruciatus tum **observavimus.**



▲▲▲▲

1Q3S. *Jungeunannia .scalaris var* rtgiJula Nees ab Esenb. in Lxtl.*

*Alicularia sralarfs A. ** Btgidnla iXta ah Etmh. llrp. (w. H. p. 449.*

Ad nivre diiliqufscfiiles monlis IMuirck, junin julioque.



1059. *Jangeraunnet aljicslrus* Schleih. in *Nees ab Esenb. Hep. eur.* 2. p. {Oh,

et reges et cetera...





1041. Junfermannin Fioerkii *Web* et Mohr bat. Taschenh p- 410.*

Jungermannia barbata B. FlirrUti *Xcti ah Etsnl. Iltp. eur. 2. p. Ili%*

In [irasrupti* licrtjiJk ad tcrani mentis *Hvhnrcck.*

1045. Jnngtrmannin Sprengclii Mart. *FT. crypt, rrl. p. HJ. tab. 5, f. 5,*

*C*lj>oj;-ij Irk-buninris A. 5. Sjitrn^clii Awi uA Etrxb, lep. **r. X. p. 9.*

In lurfhccis jwojte ca»m putoriam Tanutilit Yogesorum.





iO\Ti. Jun(rerraannia cilioris var. uliginosn,
Pliiilitins ciliirc a. 2. Kncctorum A'crt ab tdm. Bep. mr. o. f, 113.
In torfactis lijc-me initudatil circa ^{r:1gabi} naitoriam Tatuuhe.

1044. *Ulmargenia cordseana* (L.) Fernald. *Ulmargenia*, germ. p. 291.

Ulmargenia Porella Nm ab Esenb. *Ulmargenia*, p. 301.

Ad huiusmodi in rivulis, rupibusque montibus Vogtlandi Brack *Ulmargenia*. *Ulmargenia* Luc r. p. 1
doctore *Ulmargenia* AnJi^:n um ad terrain *Ulmargenia*.





iO43. *Sphserocarpus terreslris Mich—Länd. Iiicc. in n. neLac. sat. cur. 18. f. 35.*

Targiunia spha-ncarpos DOn — I)e Can<L

In tgro badrnii circa Carfcufe ad lerrana legit J/. „Brou« el bfiBjgSI communicavit. Hycmc ac vero.

1046, Riceia ciliat; ffbff.—Lindenb. Hire, inn. ad. ar, mil. my. i8. (alt, 23./ 11

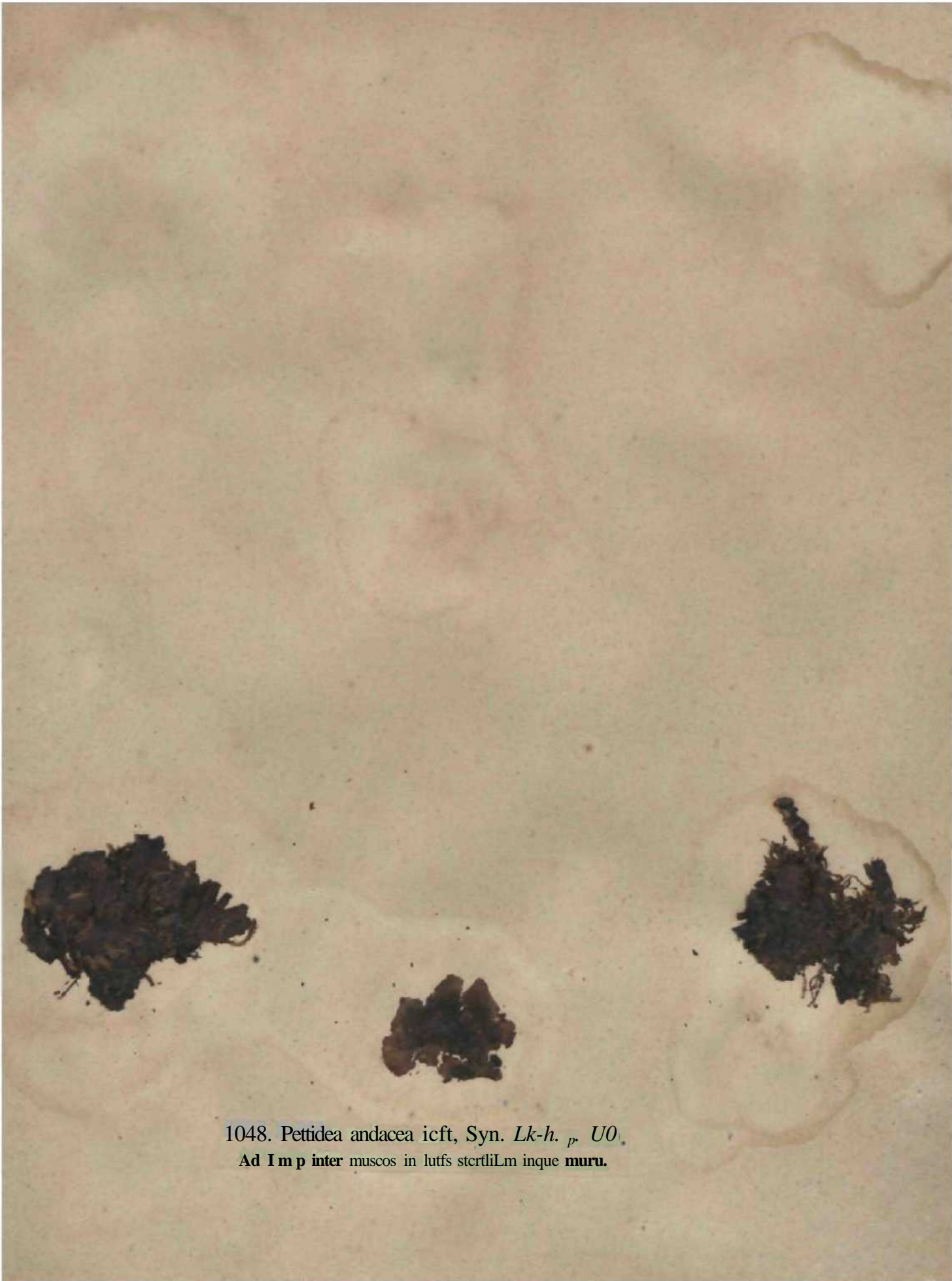
^1 terran i moOSfDI in <trvjs circa jWSdWJi am. Muhlcnbcti. Autumnno.

1047. *Cytophora hyperficta* Ach. *St/n. Licit, p. GG.*

In sumrais *Vofescensi* riiilius rare,

Eiemplru lit unico *Schartr* st'n'»trniis.

Gyrophora hyperbiirca fate. V u ° iij A *Gfropboram* dcusUini pertinet.



1048. *Petidea andacea* icft, Syn. *Lk-h. p. UO*.
Ad **I m p** inter muscos in lutfs steriliLm inque **mur**u.

1049. Firmclii atjuih *ch. Syiu Lirh. p. 20 j.*

L. < li<n aquilm .ft I. |m|mc:|f|;| aqnln D. C.

Sept^r tin monli* *Hohmrrk V<er*ormn nirlssilln-*, at fretfQCIM ill Ci'hpnnis [*Proli*],
in Gallia oeddtttali *Drlitr. Lenurmawl* undo exemplaria boc belnn.

IOJO. *Parmelia muralis* nor. Vngesbca *Sckar. licit, help, spirit, p. 420.*

Pbcodma DcbrD!«ircutn var. *VafgcBtacam.*

AJ ntpa ntiidas mauLi *ItoJmrck* Vogesonim **df»«mrit rev,** amicua .B/^d.

ffl. jt. *Lecanora crassa* Ach. *Æyrt. lich, p. 1^oO.*

Lic' *Lecanora crassa* Ach. *Æyrt. lich, p. 1^oO.*
Ad rujits *cskatii's lemmqw* Akiliae sup<ion>, Jun^i, Cebennarum
ijjide amicus *Pratt* amjtot c.p.piles inisit.



1015. Lfoanom **fti^ens** *Acfi. Si/n. Licit, p, 183.*

Lichen (itriniis *Ekrh*, T'licnJium **fulgeus** *Z. /?*

Ad (errsm lulosum promiseuc cum **Lecanon failigeta**, cfna ¹ "n'm ratum.

1055. *Lecanora Efagenj* *Arh. Syn. Lick, p- 1C7.*

f.ii.ljen cirrulsecns Uaijen.

Ad Sarpes light-as : in itcLis H saxis.

10 *lik. Lecanora albella Act., S/n. Lieh, p. 168.*

Lichen albens Pen.

In eorlite P. Aietfe pectinata.

4053. *Lecanora cinereo-fusca* Ach. *% n, It'di. p. /3.*
Lichen cinereo-fuscus *jfh.* PauUrin fenugiae ZI. f.
Ad oriicra arliorum.

1036. COBOM rlmnim *left. Syn. Lich. p. 510.*

Lichen *tnienatw Batnh.*

Ad terram saxa calca *na, is mmris Junssi, Cebennarumque.*

iOH7. Cucuicia pulpusuni Arft. Si/n. tech.p. õil.

J-iiljoi jiiil)nsus Berttk,

Jn muns, ad lerrara saxayup Jurasai, L'.Uinrinpa' sulo calcarto.

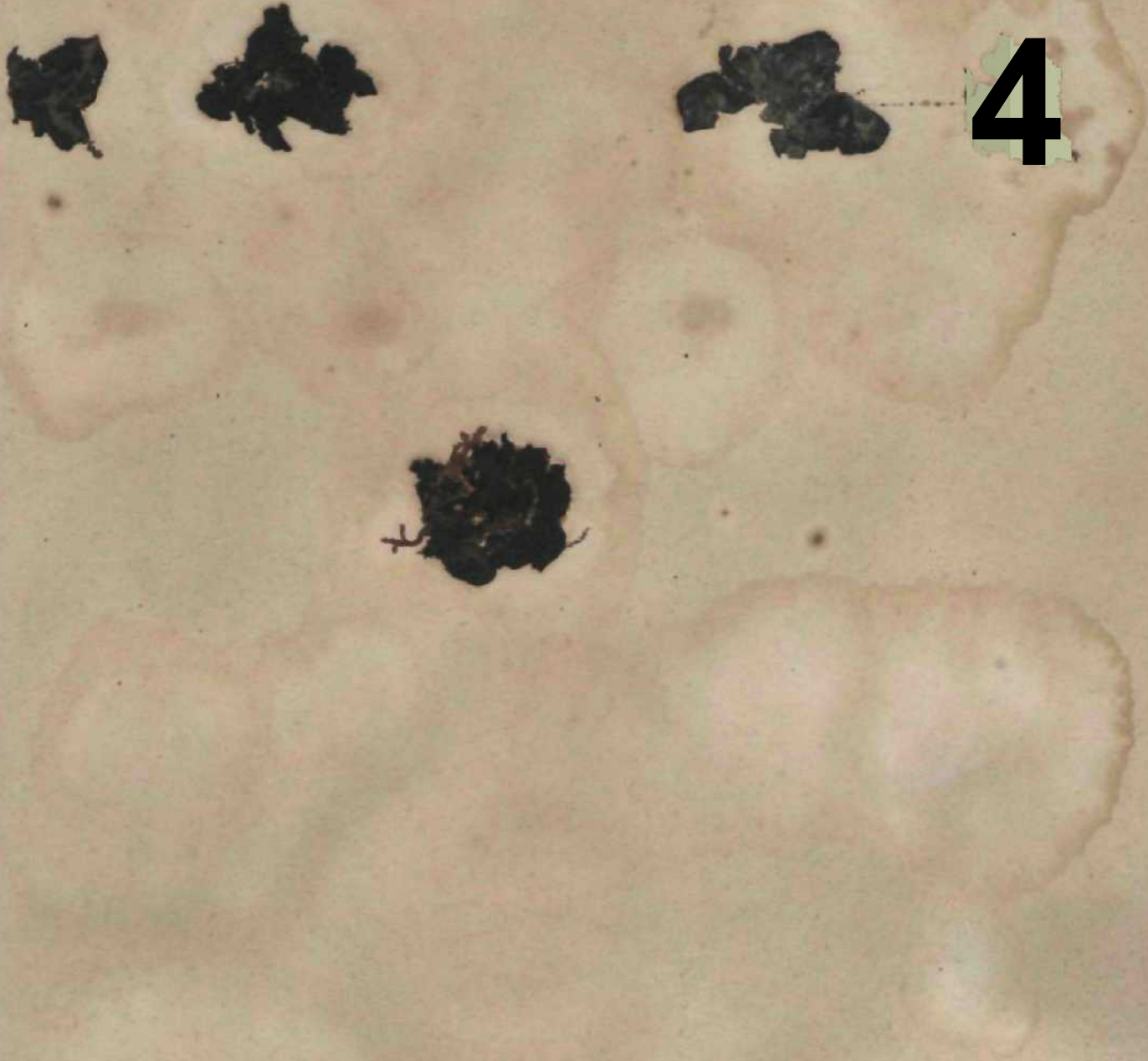
1038. *CoBeaui pakulma* Ach. *Syn. Lich*, p. 319. - ^ ^ ^
Lichen ptlmate iMaU. *niculatum*
Inter muscos in Vogesorum Jodi sterilibus.



10j9. *Colleraa fiaccitluni* Acf. *Sj-n. Lick. p. 522.*

Lichen rupestris Skirls.

Ad ropes madldas, Jurassi, Loltaringias, Cebennaram.





JO6O. Coliema IrsnieJloides *h. cyanescem* ;ich. \$yn. Idch. p. 526.
AJ granites^ V (igu sorum rupes.



1061. *Coflema lacenim* Ach. *Syn. Uch.* p. 327,
lichen lucent *Sirar.* Lichen Lranefla *Roth.*
Ail let-ram, rupes, infr tnuocos.



M

m



40G2. *Cenomyce alcornis* Ach. $\text{£},,,$. *Licit*, p. 250.

Lichen foliaceu //**. Udien nmbipm ^t

Ad trnm in craps sierilbus \\MIM el Lotlwrin^.

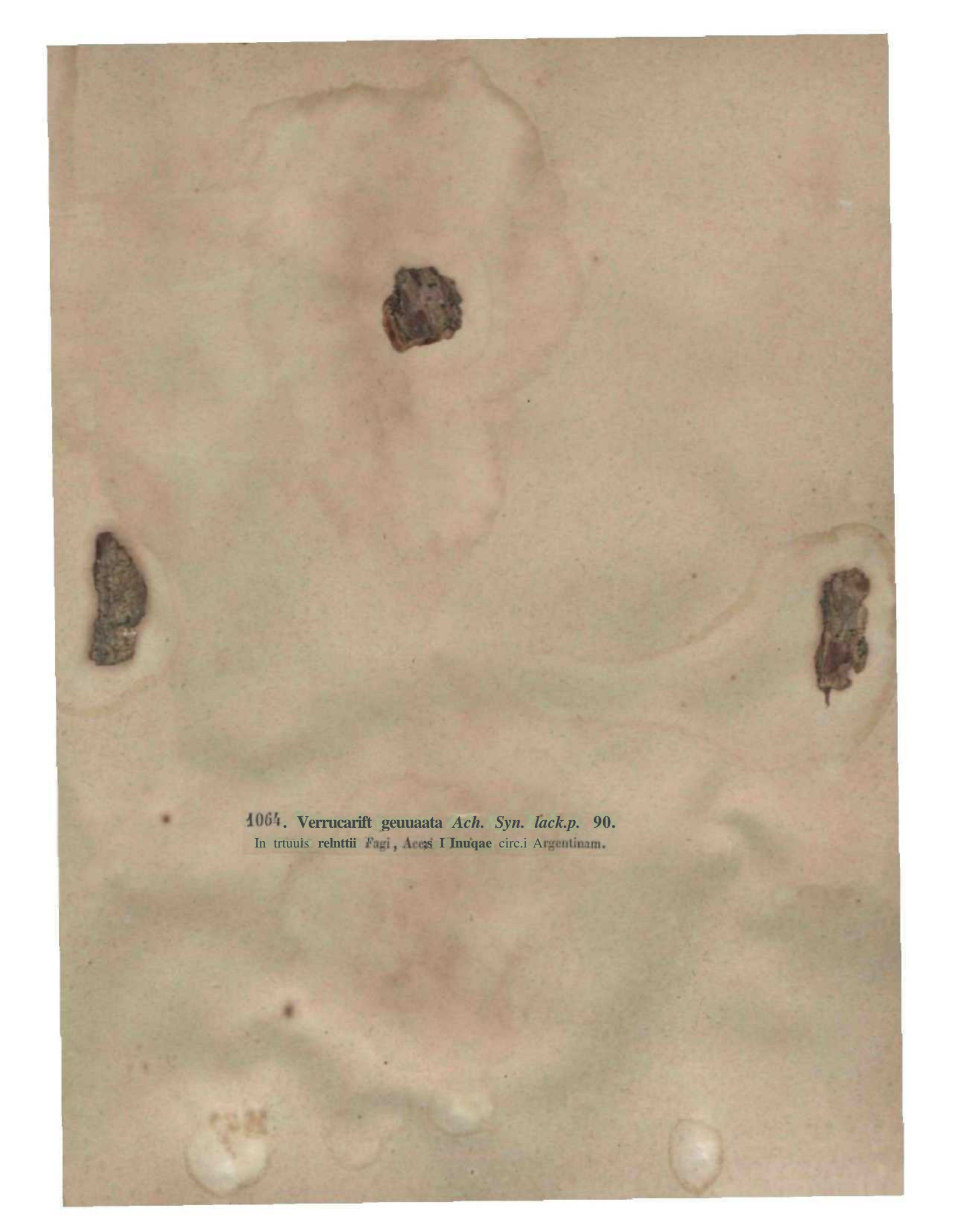
Ob thallipilos margin, nregionemque geograph. potius ad *C. alcornem* quam ad *endiviefoliam* retulimus.

1063. *Onomyce rangiferina* var. *alpestris* Ach. *Syn. tick.* p. 278.

Cbdunia rangiferina par. *alpfrhs Fl&rt Clad, p, t6S.*

Ad ripis terramque | ojetsorum pmpd <MS:DI pasloriam *Tanach* dietam.





1064. *Verrucaria geuuaata* Ach. *Syn. lach.p.* 90.
In trtuuis relnttii *Fagi*, *Acçs* I *Inuqae* circ.i *Argentinam*.

1067. *Peltigera nigrescens* Ar/t. Syn. Lich. 17. t. 9.

Verrucaria nigroscons Pet*. — *Thin Lich.* far. p. 217.

Ad sax& ealtaiLi Alsatis ol Lotharingie.

JOH. Isidium Wlatrii Arli. Sijn. Itch. p. 282.

Liclich punctatus Dkkt- **Pandia scripta**, cmstr in Isidium mubb //, n W. cur. p. 191.

Ad saw Vogesorum granitica.

iOG7. Caliciiii ligillare *Ack. Sytt. Lich. p. 55.*
Lichen Li^ilbris *Ach. Hjiib*jm [igflbrte Ach, r.itelhria Li^ilUris D. C.*
Ad trabcs ijitrriiui Jtre espositai prope Ai^{gentinam} obaerravil b. *Kneiff.*

4068. *Calicium* **panctinum** *Arh. ex Srherr. Spic. p. 4.*

Ciliuin **bninneolaif** *Fries Lkh. r>r. p. 595.*

Calicium panctinum *Arh. ex Srherr. Spic. p. 4.*



1069. *Cisticium hyperellum* var. *uliginosum* Sacc. Spic. p. 230.

lichen hepaticus, Cisticium uliginosum D. C. f. r. p. 54.*

Ad uliginosos Vogesorum truncos.

1070. *Hysterical tdevabun Pers. ex&u&y Sot. Caff. 2. />. 719.*

F M d ium hystorinum Duf. Ann. des se. nat. 13. p. 521. tab. 10. f. 5.

Ad ramos dej ettos Duxi raroapnj ,10^ sed EreqBcn^r rirta Leoiovicmii mule ab ant. fi Lamy accepianis.

1071. *Hysterium commune* var. *nilidttm* *De.sm. Ann, de\$ sc, not, \$*ser.* 10. p. J 13,

Hypotienna vir^ultorum D. C..

Ad caulcs *Sulidjiginis Vrgaaurcffi* promiseuc cum *Lrptosrunu vulgari.*

1072. *Hysterium maculare* Fries — *Grevtl. srot. crypt. flo. 3. tab. 129. f. 2.*
In foliis sridis *Vacdnii uli^inosi.*



#



1073. *Ilysterium foliicolum* var. *Hederse* Fries — *Grevil.scot. cnj.fl. tab. 129.*" 1.

Ilypoderma xj-lumoides *mr.*, *Iledeiu D, C.*

In *Hederjc* foliis *ariilis.*





1074. *Sclerotium podoides* Pers. Syn. Fung. p. 22.

Sclerotium nabrovi b. podafn (-'ri)*.

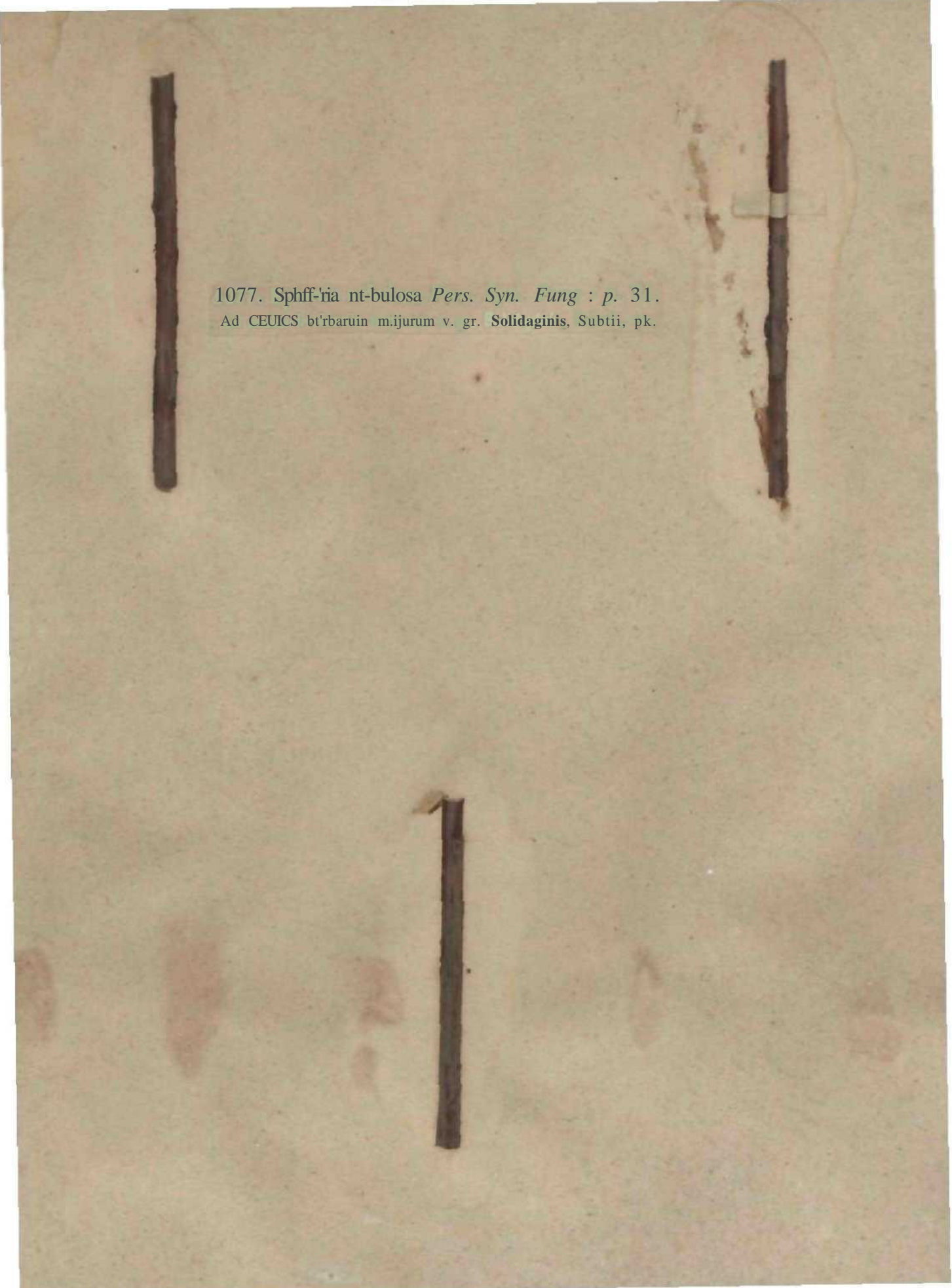
Ad laicos thgntos in Vogesomm sylvis editorihus.

1073. Spli^rh micula *Fries Eknch. Fung. 2. />. 101.*
Ad ramos **hagaaccBta** IUum&i al^itii, uos w. moulc Jura , amicus *Proil* in **Cebennis.**

4076. *Sphaxria olcrum* fries. *Blench. Fung.* 2. 69.

In *aluto* Bctt lignosa cauJium L-asHionun semipuiridyruoiUnssicK olcracra prinji>o!><na*U in. *PnU*,





1077. *Sphff-ria nt-bulosa Pers. Syn. Fung : p. 31.*
Ad CEUICS bt'rbaruin m.ijurum v. gr. **Solidaginis**, Subtii, pk.

1078. Sphffiria sBcpincola *Fries Syst. myc. 2. p. 498.*

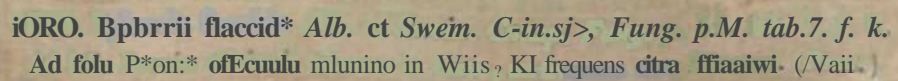
Ad ramos lanpiesceals EvoBymi, Iliefs, Fraiiniquc.

1079. Spluoi-a Tasi *Fries Syst. mijc. 2. p. SOO.*

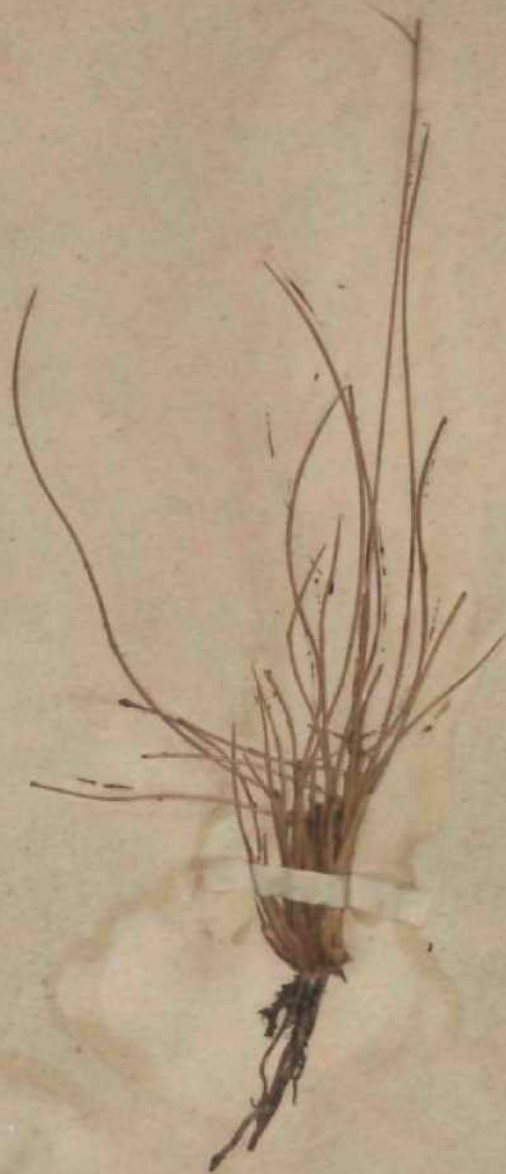
CrypU»pha?r» Taxi Crrvit, ietit. crypt. pur, 1. tub, 15,

Ail ritmulos d folia langu^ccntia IW-





ORO. Bprrii flacid Alb. ct Swem. C-in.sj>, Fung. p.M. tab.7. f. k.*
Ad folu P*on:* ofEcuulu mlunino in Wiis, KI frequens *citra fiaaiwi.* (Vaii.)



i08i. Spbaria *dviAfx* 6. **Hard!** Fries — Sytt, myc. % p- 520.

Ad f-la >onli itriels: ^wrida iu sunnuk Vogesoratn pascuis.

108f. *Spliwrii Erynficii Fries* — *Duty not. gall** 2. p. 217.

In *fblis Eryngit campistris amicus Proti prmiti* observavit.






1085. Sphttru Osirutlii *Fries Sy&t.* mye. 2, p. 526.
Ad foli Imperatoriae Osrullii a pud no* in Wrti.i sed a4 plantam spontaneam in Cebennis.

1084. *Cytospora rabescens* Frits *Si/st. myc.* 2. p. 342.

Ad f~~mu~~H Surbi >n muntc *IJuhnreck* VugeSurum.



108J. *Cylfspora leucospermi* **b. Haoneols** *Fries Sij\$> myc. 2. p. 54*³.

Ail nriit)5 Jlitii Aquifalit ramos.



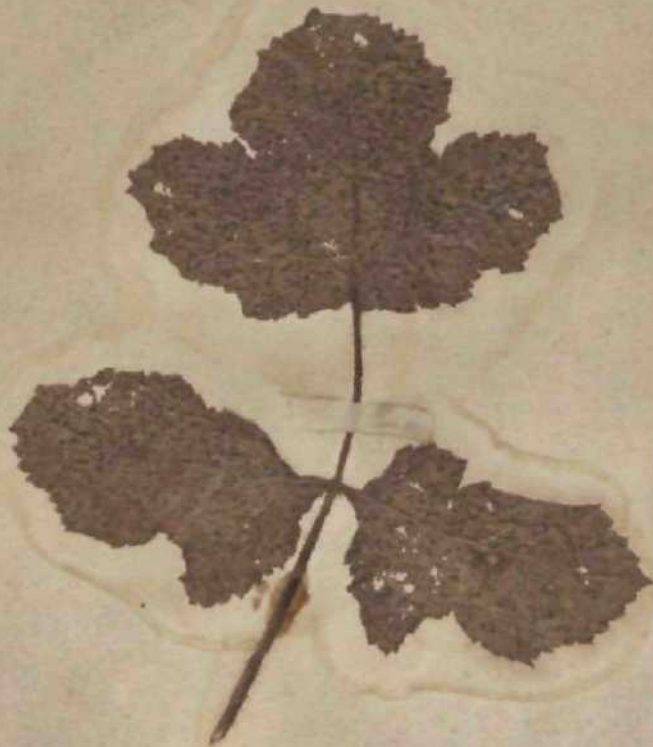
JOSG. rhoma **Tami E. Zmny in Lid,**

Ad caulrs **euortow** T.imi **eonnannis,**

Plmmir plunroli *Drima'*, Rj)fr<di?nblun^is nbtusis **dnas laoUna** Sn>ru'ns coiiiitipntilms **species affinis,**
»qua laincn JilTprL sporilii-. **fasifofmibQS** cunaLis **Motb** spurulis jilurihu* rrji|pli>j **La<i>j,L r.**

iOS7. Dollu'i IferacFfi *fairs Syst. tmjr. 2. p. 336.*

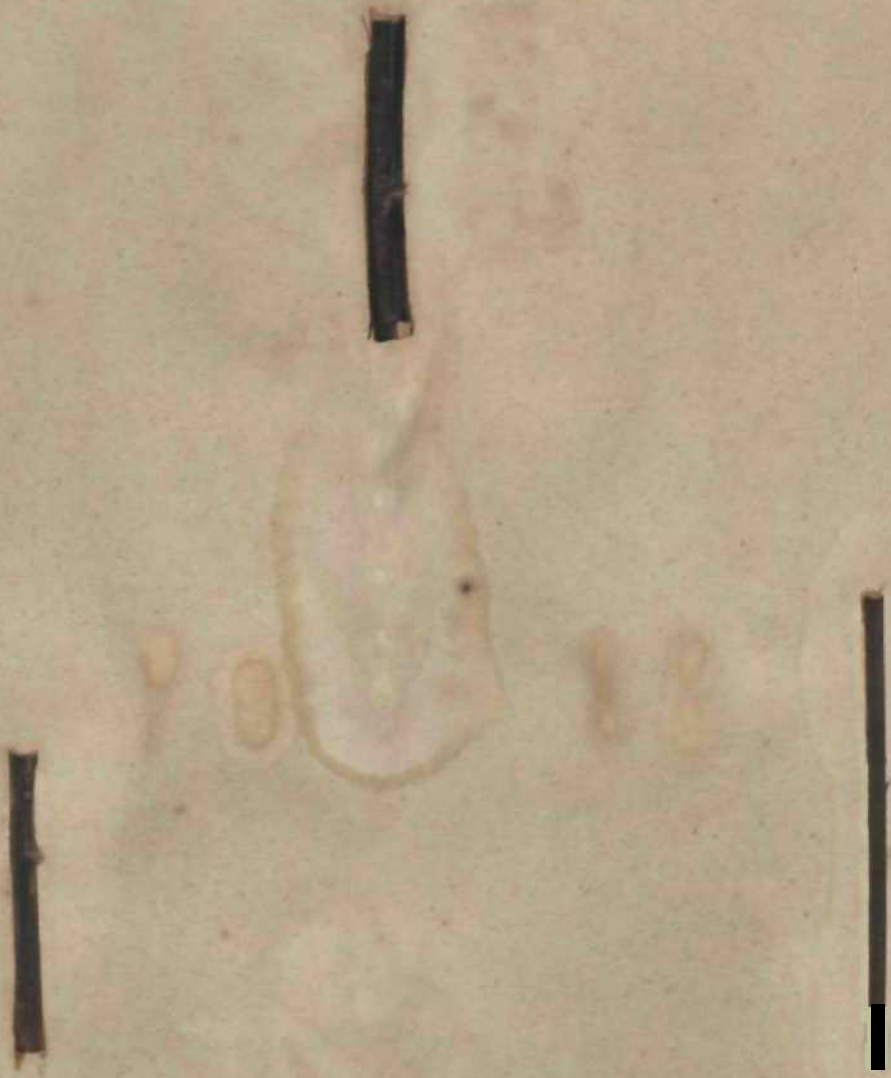
In fulii* langnest-(iitibus Heradei Sj>li<jndilii, *autumno.*



1088. *Doliidea Epilobii* Fries *Si/st. mijc. 2. p. B*³⁹.

Adca<il*s Mnificafii'ps Wcate. Auiimoo.

Loco sed millu comclrn: a DdltidM Epilobti ilidclrl i't *Fritt in Lilt.*





11

1059. *Sporocarpium clavus* Fries *Syst. myc.* 2. p. 28.
Sclerotium Cuvus fl. C. J/cm., fltm. 2. JJ. i1G. («fi, 14. f. 8-
Qavus Biif. *Bunks. Sdgle etfoli* />'«/. E^ot 2^u*ot
lit glunil^ ^oi'iilis /LsUle. Scnijii;i ^mminis morbosa.

1090. *Tubercularia granulata* Pers. — Grevil. sco. crypt. Flor. 4. tab. 187.
Ad ramos dejectos Aceris Pseudo-Platani in monte Hohneck Vogesorum.

1091. Tübercnlarla **expansus** *Pries in Demaz. pi. crypt- exs. n° 172.*
AJ triuitui Cupuu< Exctnphria at, am. fjesma:iiT» ate **epimus.**

1092. *Lycophotia peltiniformis* Fries *Syst. myc. Z.p.* 8: 117

Licea bicolor Ptr. *Icon. pki. tab. 3. f. 11, 12.*

Ad parietes, ligna aliamque materia in locis suffocatis.

1095. Peziw betistris *Fria Sg**. *mtjc.* 2. p. 145.

Ad culmos nalaiils Scfrpi licustris agosto (tpL circa Ar^rtiiiMm fa. S<tlUr*

PaU> jiiiint **Et** luecica specimiua ex *Firt m lut.*

JOO't, Peñza Geicfla *Fim Syst.* nyr. 2. p. 152.

Ad l'rrsa iiiitliurn cariosa Ahietis.

1093. *Sclitlis nivea* Pers. *Mycol. ettrap. I. p. 339.*

In acubus Pini mariliniir dcriduis *vm.*



1096, t^hriirn rtifum *Fries Sym. ntye.* 2- p. 232.

Stictis ? n. f. *Prj. OI*». «yr. 3. ., 74. ^6. fi. ^. 6.

Ad ligna vetusta Aëre exposita *...* sorum editoribus.



1097. *Ferisporium rufum* Fries St/sf. uit/r. 5. l. 252.

In hEm U«anit roluDdifjlii IH //««nio(anno 1873 dctt'vit. Vet*.

Dothidea Robergei Desmaz.



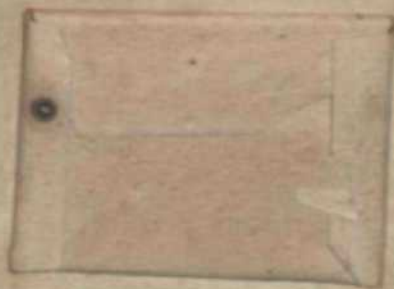
1038. Fusisporam Bete Besmaz. Arm. <k& &c. nat. 19.p. 5-36 tab. I 8. f. 2.
Vere ad radice i Btt* nd>nt pulrttwBLw pritwrtim hi Calli* Weaii ah -va DU missum.

1000. Exosporiuni Tfli«*iwiit. — G*W& seo, crypt. FIJi. tab. 20S.

IMiiiittLboaporium Tilie: Frin S>jxt. myr. .i.]>. SFO.

In iLiiutj's pmuruiH Tilin>. \<TP.

Nonnunquam n(varirtjs minor Corynei puJriimb in Doe, VI. n* j''¹ ^ . m u s .



1886. *Hymanotium fenestrale*. *Reich. Bot. Pflanz. 20. 1886. 17.*

Conferra fenestralis Roth. Sporobrichum fenestrale Ditmar.

Au rcnestnnun *Un in tool bumitlu lujuni aUalki obvojicnini jmti Snf.'u>7^ tl Schimptr.

**J. DIAN DE TANIE GARDEN,
LIBRARY**

DATE RECEIVED

BY NO. SECTION

BY NAME

BY NO. SECTION

DATE



.....
.....
.....
.....
.....
.....

BOOK CARD

Indian Botanic Garden Library
BOTANICAL SURVEY OF INDIA

Call No. STI-C.....Acc. No. B-10,129.....

Author.....Mouquet, J. B. & others.

Title.....Stirpes cryptogamae Vogeso Rhina-
-nae quas in Rhini Septentrionalis...

Name of Borrower/Code No.	Date of Issue	Date of Return

INDIAN BOTANIC GARDEN LIBRARY
BOTANICAL SURVEY OF INDIA

